



Pear tree Hill Solar Farm

Environmental Statement

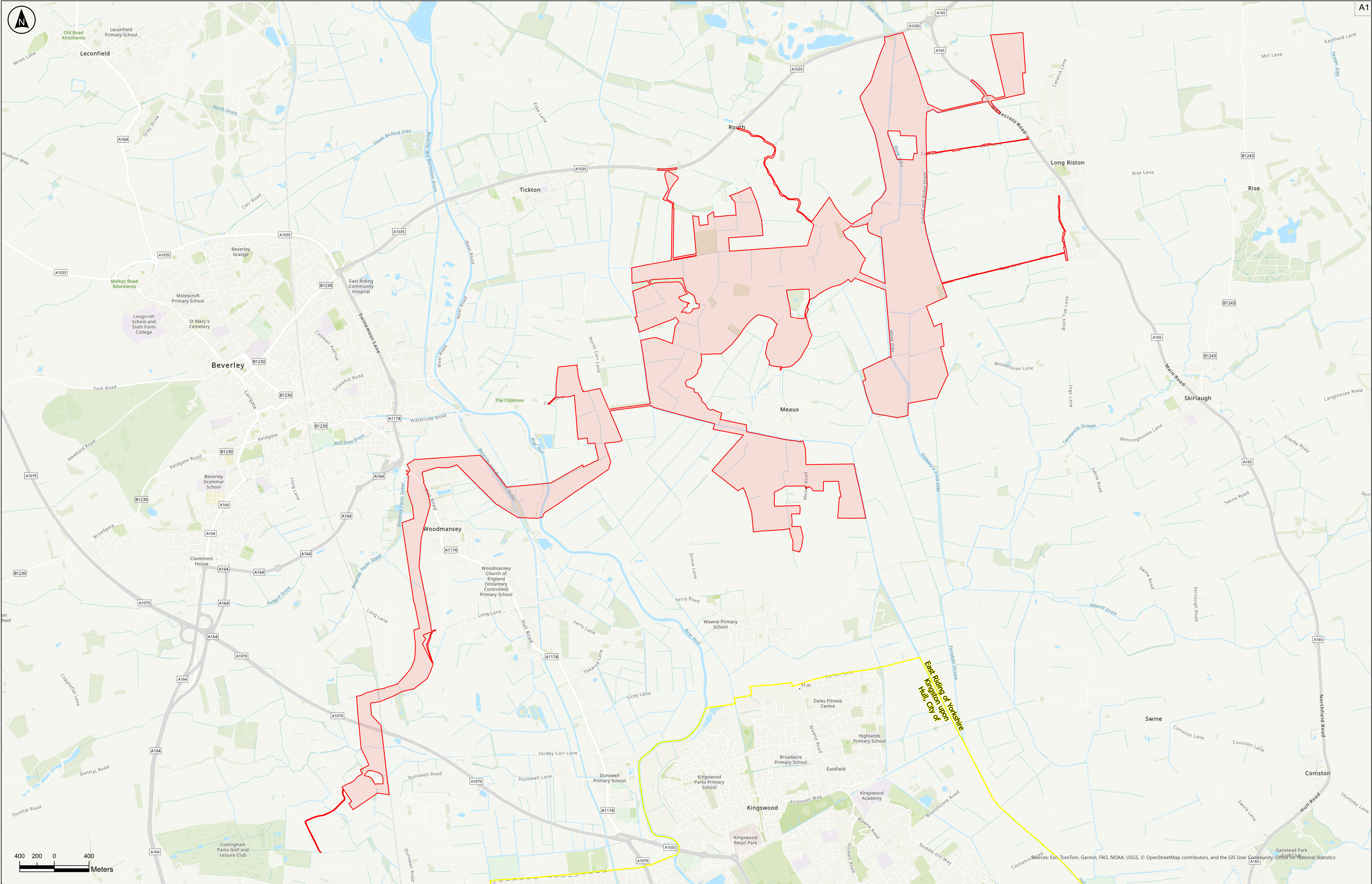
Volume 3

Figure 1.1: Order Limits and Administrative Boundaries

Revision 2

Application Document Ref: EN010157/APP/6.3
September 2025

Planning Act 2008
Infrastructure Planning
(Applications: Prescribed Forms
and Procedure) Regulations 2009 –
Regulation 5(2)(a)



Key

- Order Limits
- Local Planning Authority Administrative Boundary

The Base mapping is based upon Ordnance Survey (OS) data. Reproduced from Ordnance Survey maps by permission of Ordnance Survey on behalf of the controller of His Majesty's Stationery Office (HMSO). © Crown Copyright Ordnance Survey 2024. Licence number 0100031673.

Notes:					
P02	27/08/2025	CJ	MM	BT	BT
Rev	Date	By	Chkd	Appd	Authd

Client

RWE

Designer

RSK

Project Name
Peartree Hill Solar Farm

Drawing Title
Environmental Statement,
Figure 1.1: Order Limits and
Administrative Boundaries
SHEET 1 OF 1

Scale at A1 1:20000	Coordinate System: British National Grid
Status DCO Application	
PINS Number EN010157/APP/0.3	Rev P02

RWE Renewables UK Limited

Windmill Hill Business Park,
Whitehill Way,
Swindon,
Wiltshire,
England,
SN5 6PB
www.rwe.com